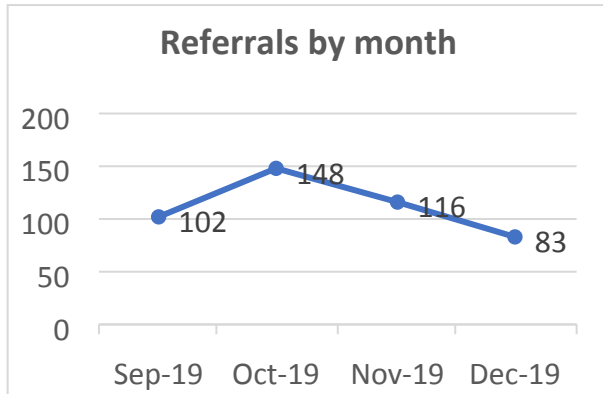


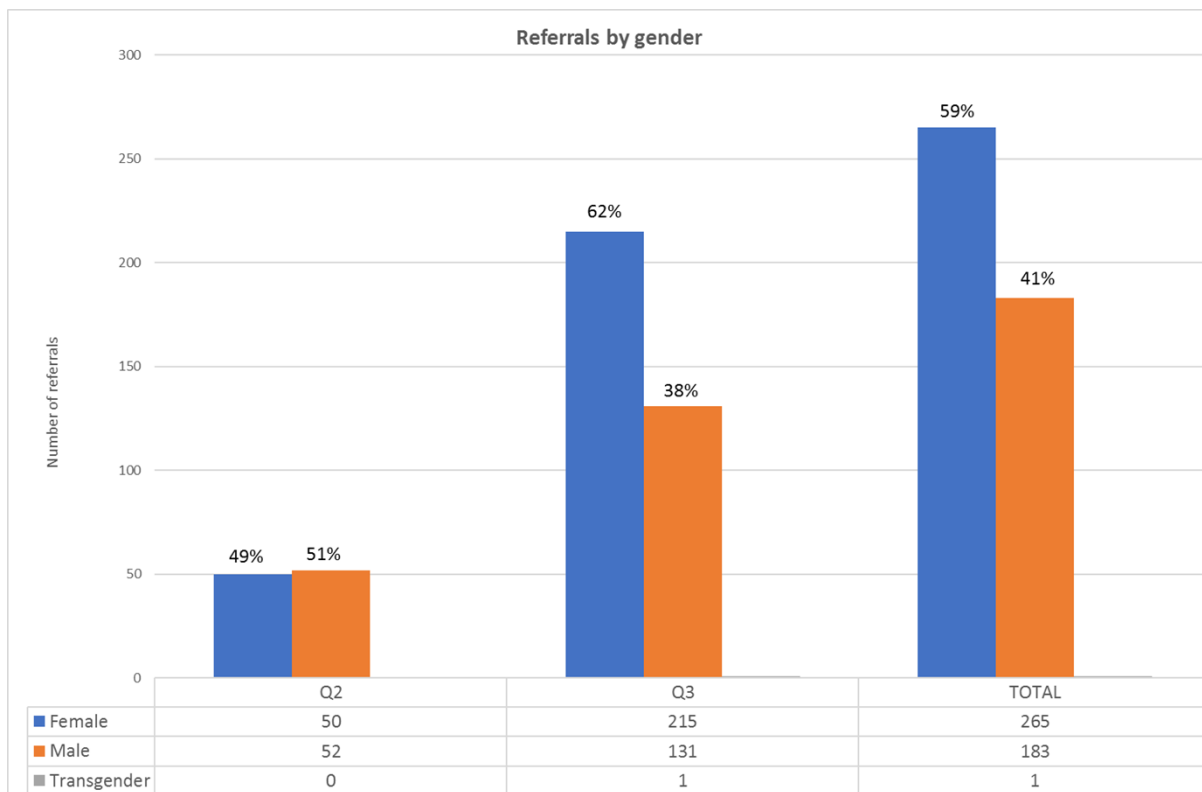
## Appendix E: Aberdeen Links Quarter 3 2018/19 Report

### Aberdeen Links Referral Numbers for Q2 and Q3



| Quarter | Referrals |
|---------|-----------|
| Q2      | 102       |
| Q3      | 347       |
| TOTAL   | 449       |

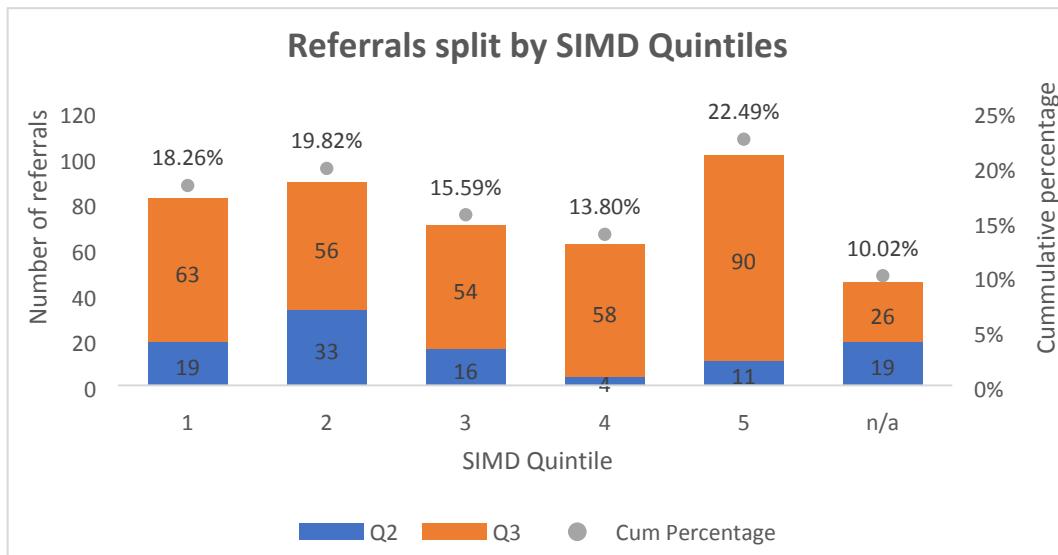
### Referrals Split by Gender for Q2 and Q3



### Referrals split by Age for Q2 and Q3

| Age     | Q2 | Q3  | TOTAL |
|---------|----|-----|-------|
| <24     | 1  | 20  | 21    |
| 25-44   | 25 | 103 | 128   |
| 45-64   | 39 | 115 | 154   |
| 65+     | 40 | 109 | 146   |
| Average | 59 | 54  | 55    |
| Min     | 19 | 18  | 17    |
| Max     | 97 | 96  | 97    |

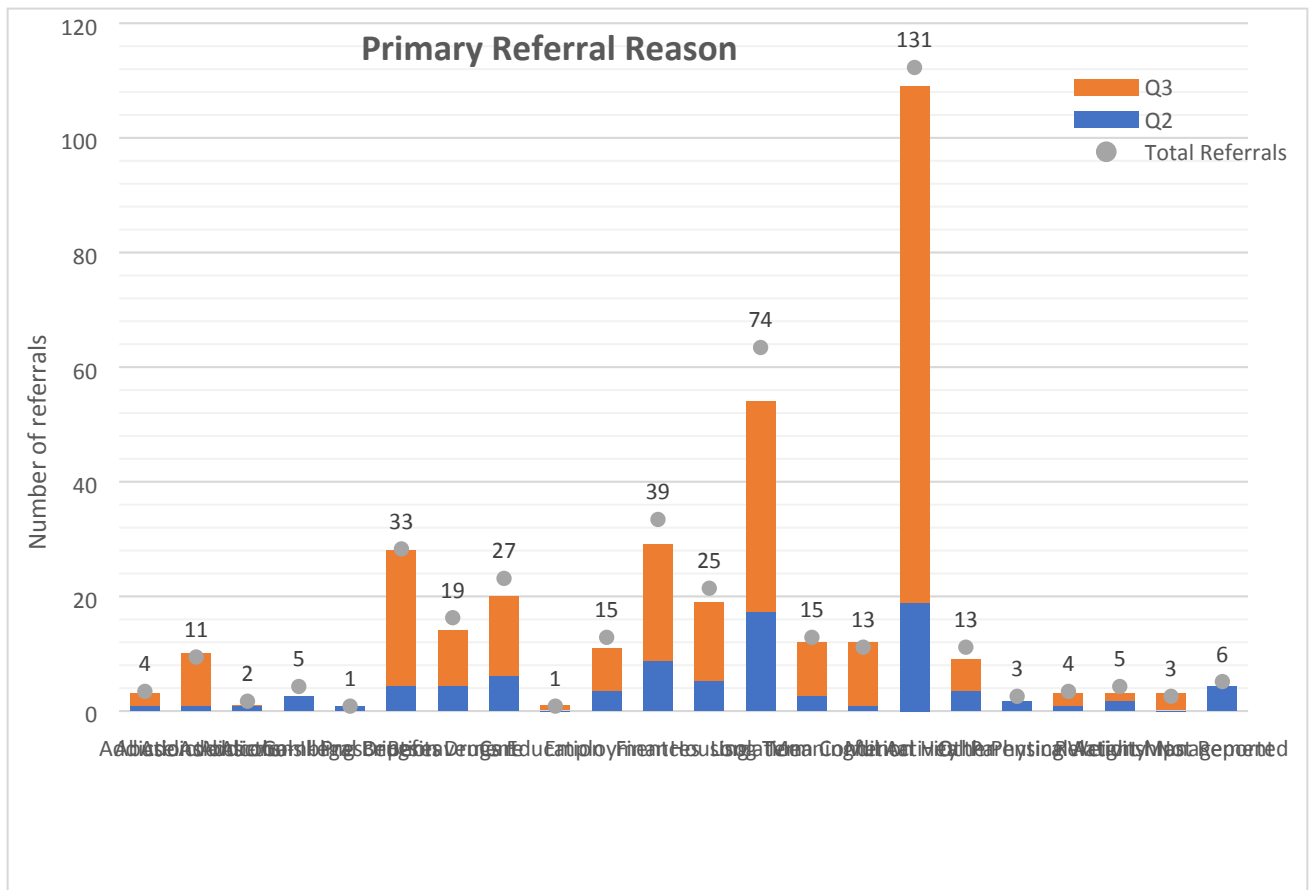
## Referrals Split by SIMD\* Quintiles for Q2 and Q3



\* *SIMD (the Scottish Index of Multiple Deprivation) provides a deprivation rank for each of the 6,505 datazones in Scotland. SIMD Quintiles split up the dataset into 5 groups, each containing 20% of the data, with SIMD Q1 representing areas of greatest deprivation and SIMD Q5 areas of least deprivation*

*n/a = those living in new build houses whose postcodes are not captured in the 2012 data used to determine which quintile a referral falls into.*

## Primary Reason for Referral Broken by Q2 and Q3



## Onward Referrals by Category for Q2 and Q3

